

HIGHLIFTER

SNORKEL TRANSMISSION TOOL WARRANTY

High Lifter offers a Lifetime Warranty to the original purchaser that our product shall be free from defects in material and workmanship for the life of the product if utilized in accordance with the manufacturer's instructions for operation of this product. Proof of purchase required.



DO NOT USE AN IMPACT WRENCH, ITS USE WILL CAUSE DAMAGE TO TRANSMISSION HOUSING. THIS WILL VOID WARRANTY.

WARRANTY PROCESSING

If you suspect your product is defective, **DO NOT** disassemble the product to determine the cause without prior approval as it may void your warranty status. To begin the claim process, please e-mail our warranty team at warranty@highlifter.com and include the following in the e-mail:

- Your full name, address and contact phone number.
- The year, make and model of your vehicle
- The part number of the product
- Photos of the product installed, and vehicle product is installed on
- Proof of Purchase (Required for all warranty claims and you must be the original purchaser)

Once a claim is created, you will receive a return authorization number (RMA). Write this number on the outside of the box containing your defective product and include it along with your name and contact information inside the box. Product must be returned in the original box or a box of equal strength and packaging. Product sent without an RMA number visible on the outside of the box or sent COD will be refused. Ship your product to the following address:

**Attn Returns: High Lifter Products
7455 Atkinson Drive. Shreveport, LA 71129**

Once your product is received, we often have your replacement or repaired product shipped back to you within 3-business days of receiving it. Please note that High Lifter is not responsible for shipping charges on product returned for warranty or repair, including duties and fees required by those residing outside the United States.



HIGH LIFTER PRODUCTS WARRANTY CLAIM

Name: _____

Product Part Number: _____

Address: _____

Place of Purchase: _____

Date of Purchase: _____

Phone Number: _____

Reason for Return: _____

E-Mail Address: _____

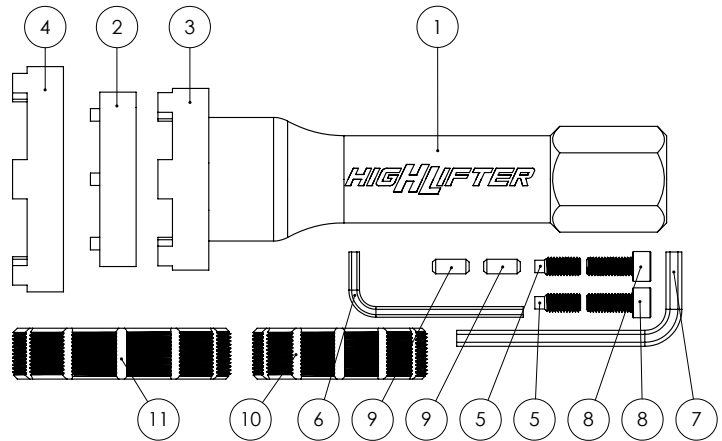
Reminder – This claim must be accompanied by a copy of the original receipt.



HIGHLIFTER

PARTS DIAGRAM

ITEM NO.	DESCRIPTION	QTY.
1	Transmission Snorkel Tool	1
2	Transmission Snorkel Tool Adapter	1
3	Transmission Snorkel Tool Adapter	1
4	Transmission Snorkel Tool Adapter	1
5	M8 Extended-Tip Set Screw	7
6	Hex Key (4mm)	1
7	Hex Key (6mm)	1
8	Socket Head Screw M8x1.25mm	6
9	Slotted Spring Pin 6mmx16mm	4
10	Transmission Snorkel Tool Tap	1
11	Transmission Snorkel Tool Tap	1



TRANSMISSION TOOL INSTRUCTIONS

! DO NOT USE AN IMPACT WRENCH, ITS USE WILL CAUSE DAMAGE TO TRANSMISSION HOUSING. DOING THIS COULD VOID WARRANTY.

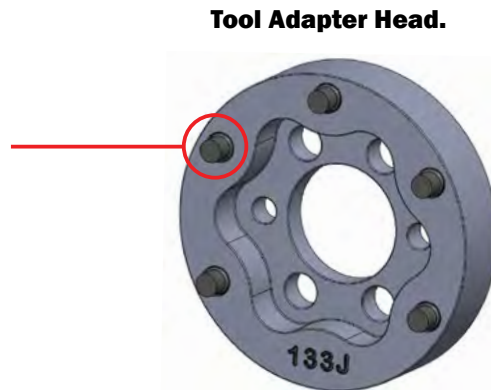
ASSEMBLY

- Install (2) slotted spring pins into tool body.



Tool Body

- Install (5) extended-tip set screws into the tool adapter head.



Tool Adapter Head.

USAGE INSTRUCTION

- Select the appropriate tool adapter or thread cleaner.
- Align tool head onto the tool body using the two slotted spring pins.
- Assemble using (4) M8x1.25mm socket head screws.
- This transmission tool can be used with a 40mm socket, adjustable wrench, or by using a 1/2in drive ratchet.

